

The Houghton HOTEL

Location: Johannesburg, South Africa
Completion: 2019
Size: 60 000m²
Total Cost of build: R870 million

Considered the gem of the affluent Houghton Estate, overlooking a Jack Nicklaus golf course, The Houghton Hotel offers all the services you would expect from a 5-star hotel, including conference facilities, a spa, gym, restaurants and coffee shops. This 180-room hotel forms the knuckle of the development flowing into two curved wings which house serviced apartments on one end and residential apartments on the other.

Architecture inspired by its Art Deco heritage wraps its undulating curves around the natural environment and creates a central piazza that pulls the golf course greens and landscaped gardens up to the threshold of the building, which floats effortlessly above.

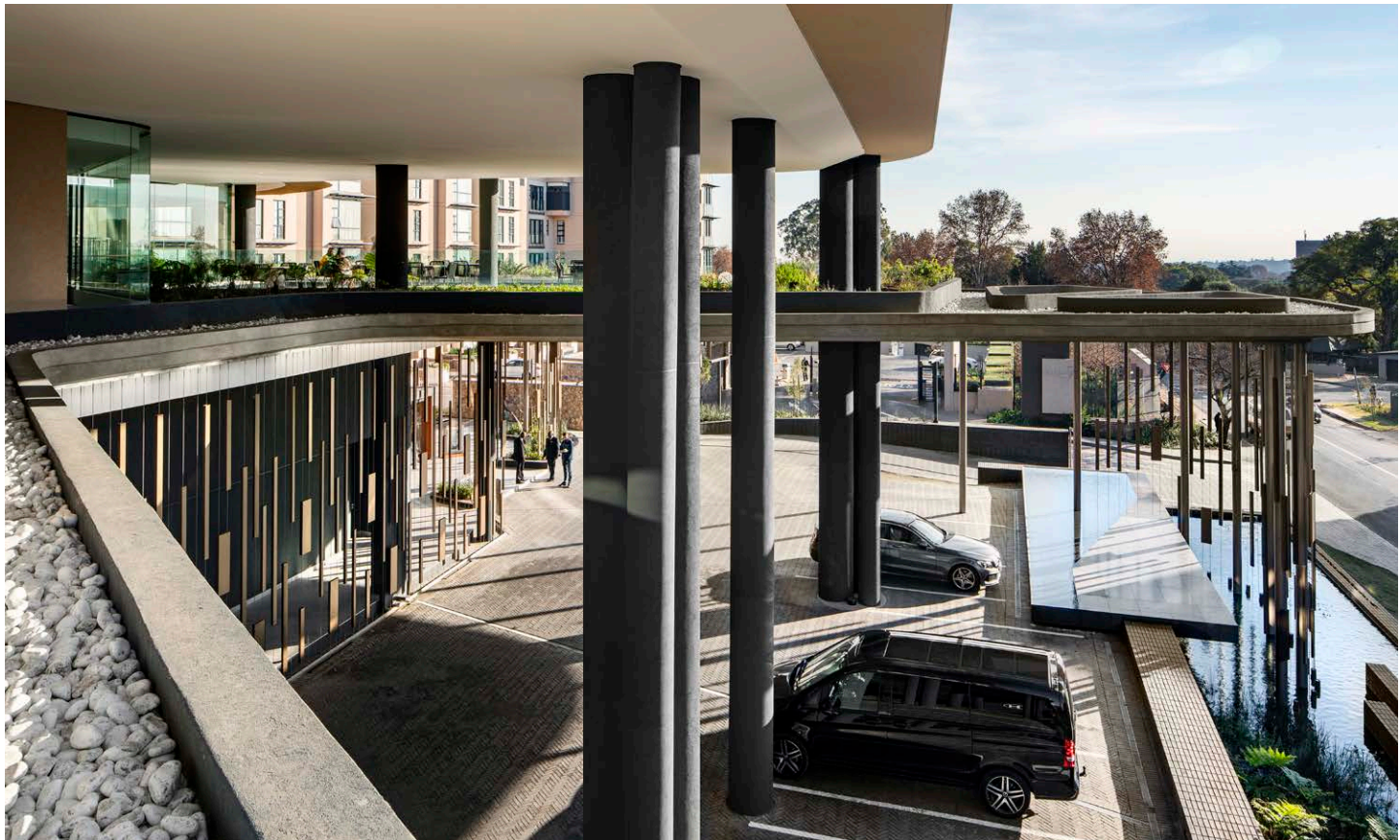
Embracing nature as its hero, the architectural design required parking to be relocated underground. This made it possible to retain the natural landscapes, and focus on the views. High precision design and sophisticated materials such as concrete, steel and glass blend with its Highveld heritage of natural elements and soft sweeping lines.

The underground storm river running through the site was central to the core design concept of fluidity. It has been reinterpreted as water features throughout the development and provides a sustainable eco-friendly water source for the landscaped gardens and golf course.

Merging indoors and outdoors, man-made and nature, Highveld and lush greens, The Houghton reflects the style and luxury of its wealthy surroundings. Its masterstroke was embracing the environment inside and out, making it core to all design considerations.

Landscape concept: Reconnect the visitor to the site through the use of water

The underground river, flowing off the local ridges, feeds the streams and dams of the adjacent golf course. This river runs directly below the hotel site and the hotel gardens attempt to reconceptualise this as a surface feature. Modelled around the idea of a Highveld/Drakensberg waterfall, a series of linear concrete water features and ponds meander and fall from terrace to terrace, ultimately falling into two large pools on the lowest level. Although not physically connected, the ponds and streams give the sense that the water connects with the adjacent streams in the golf course.



In reality, water entering the hotel basement is collected and stored in a sub-terranean tank. This water is used both for irrigation and to top up the water features and pools. Within the series of water features, water is also separated into chlorinated and natural systems. Both feed into pools that can be accessed for swimming.

Using terracing and vegetation, the outdoor spaces also assist in breaking down the verticality of the building so that each space has a human-scale.

Garden spaces

The garden spaces consist of an upper terrace connected to the restaurant, deli and sky bar. From here they are linked to a raised adult pool and a sunken garden via a concrete bridge which follows a staircase down to a sunken spa garden with pool, sauna, steam room and outdoor shower on the lower groundlevel.

A reflection pond at the edge of the conference break-out space flows into a natural stream and establishes a visual connection with the golf course.

Materials utilized are polished concrete, travertine and terrazzo all with similar light hues. These are used in combination to create a neutral surface which the water flows over and allows a palette of forest vegetation to emerge.

The upper terraces are planted with a mix of perennials and grasses, keeping views across to the golf course open, while the sunken gardens below contain a dense and rich forest vegetation.

All the plants used are indigenous to South Africa with a large portion being locally indigenous to the Highveld.

MEET THE TEAM

Client

Asvid Holdings / Leading Hotels of the World

Landscape architects

GREENinc

Architect

Boogertman + Partners – Johannesburg

Main contractor

Stefanutti Stocks

Landscape contractors

Life Landscapes

Plant broker

Tshala Plant Brokers

Interiors

DSGN



SUPPLIERS:

Nurseries

Tshala Plant Brokers – 071 683 1177
Random Harvest Nursery – 082 553 0598
Wildflower Nursery – 082 801 1741

Tiling

Travertine from Mazista – 011 998 2600
Terrazzo from Union Tiles – 011 663 2000

Pool installation, pump and tiling

Water Dimensions International –
083 448 8283

Exterior lighting

Installer: Presto Electrical – 011 334 3333
Regent lighting – 011 474 0171

Lighting designer

Paul Pamboukian – 011 880 2831

Wooden fencing and cladding

Inovar – 011 262 2720

Timber

Rhinowood – 084 580 6406

Bricks

Corobrik – 011 871 8600

Cable rope structures

Jakob – 011 460 1744

Steelwork and balustrading

Manufacturers: A&D – 011 614 9966
Mecra – 011 493 6591
Steel Studio – 010 040 3720

Furniture and umbrellas

Bloc Outdoor – 011 262 2457

Irrigation

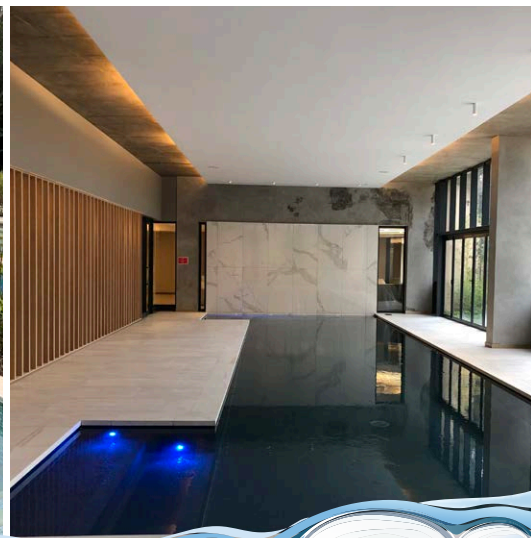
Controlled irrigation – 021 551 0355
Product used: Rainbird

Grass

Evergreen Turf – 011 948 7913

Soil and compost

Culterra – 011 300 9913



**WATER PURIFICATION |
COMMERCIAL POOL SPECIALISTS**

Proud Design & Supply Swimming Pool & Water Feature Service
Providers to The Leonardo & The Houghton Hotel

Adam Kriel: 083 448 8283 | adam@wdigroup.co.za
Herman van der Mast: 082 600 0385 | herman@wdigroup.co.za
www.wdigroup.co.za